

1. All Stage Lighting (SL) requirements provided for as follows:

Lighting Contractor (LC):

1. Provide and install all SL equipment as noted in the AVL drawings and SL system specifications
2. Make all low voltage terminations per equipment manufacturers specifications.

Electrical Contractor (EC):

1. Provide and install all electrical service, feeds, conduit, chases, fittings, wire trays, distribution panels, and enclosures, based on the SL design documents and electrical plans.
2. Provide and pull all low voltage control wire. Note all low voltage substitutions must be approved by Consultant.
3. Provide and pull all line voltage wire.
4. Make all line voltage terminations.

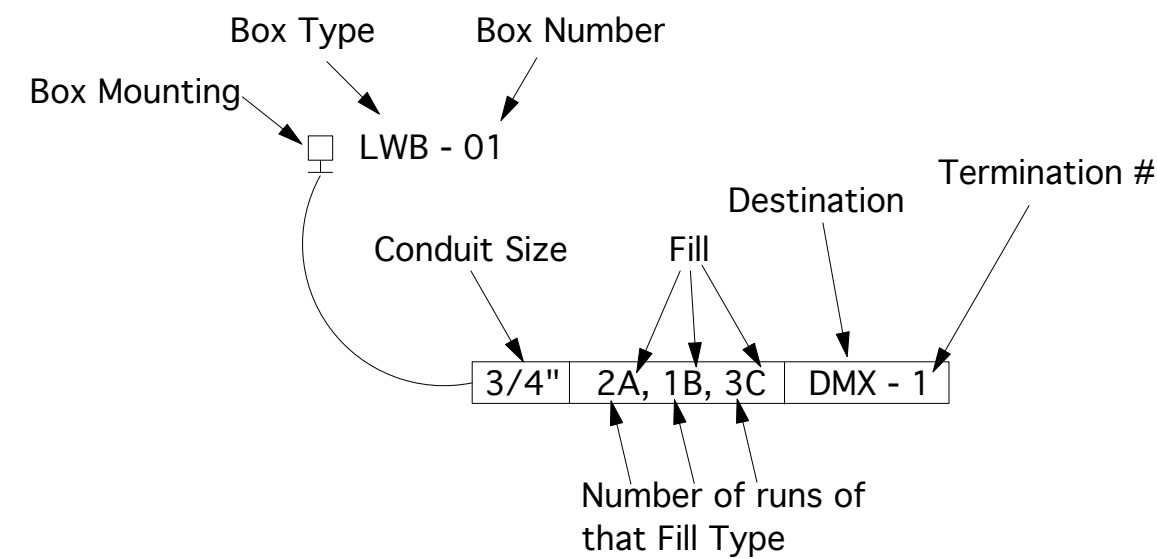
General Contractor (GC):

1. Is responsible to provide and install all structure to support all SL equipment.
2. Is responsible for millwork required for lighting and control devices.
3. Is responsible for painting all exposed conduit, pipe, boxes, and structural support in a flat black finish, or other appropriate color.
4. Is responsible for trim out and paint finishes on millwork.

2. All work is to be done in accordance with all applicable, Federal, State, and Local codes.
3. All installation details shown in these drawings are design concepts and for reference only.
4. Materials to be used, structural soundness, electrical design, etc. must be approved by the Architect, General Contractor, Structural Engineer, Electrical Engineer, and any other applicable parties.
5. It is the General Contractors responsibility that all structural mounting points conform to local codes.
6. All SL rigging is to be done using entertainment industry methods and standards. All rigging equipment must be rated hardware.
7. The exact location of all SL panels and boxes shall be coordinated with the GC, EC and LC. Heights listed are recommendations and should be coordinated with other devices where applicable.
8. All conduit and wire to take the most direct route possible between locations.
9. All control cables are to be labeled on both ends, using a Brady (or equivalent) labeler, per plan designations. Allow 2' of excess cable at both ends unless otherwise noted on the plan.
10. All cable shall be continuous and without splices unless otherwise specified.
11. All high voltage circuits are to have a neutral per circuit. Common neutrals are not acceptable. NO EXCEPTIONS.
12. All circuits must have appropriate ground conductors.
13. All line voltage circuits (hot and neutral) must be kept in pairs and each wire is to be marked with its corresponding circuit number on both ends using Ideal wire markers or equivalent.
15. The EC should be advised that stranded wire is recommended for use with all SL line voltage systems for the greatest ease of routing and hookup.
16. Dimmer room requirements:
  - a. Temperature range of 40° – 85° F 24 hours a day.
  - b. Relative humidity in the range of 30% - 70% non-condensing.
  - c. Clean, low dust environment. Painted/sealed walls, ceiling, and floor to help eliminate dust.
  - d. Air Conditioning system capable of dissipating dimmer generated heat PLUS any heat generated by other equipment in the room such as transformers.
  - e. Dimmer rack requires a minimum of 10" top clearance for proper air ventilation and 6" clearance on the left side for proper door swing for correct insertion and removal of dimmer modules.

 Pipe Mount Box

- ☒ Wall Box
- ☐ Ceiling Box
- ☒ Custom Box
- ☐ Flush Floor Box with power
- ☐ Flush Floor Box
- ☒ 20Amp Duplex Outlet



1 Conduit, wire size, and ground count to be determined by the electrical engineer or Electrical Contractor for all line voltage circuits.

LCS - Lighting Connector Strip  
LPB - Lighting Pipe Box  
LWB - Lighting Wall Box  
LCB - Lighting Ceiling Box  
LFB - Lighting Floor Box  
GJB - Gridiron Junction Box

Some types might not be used

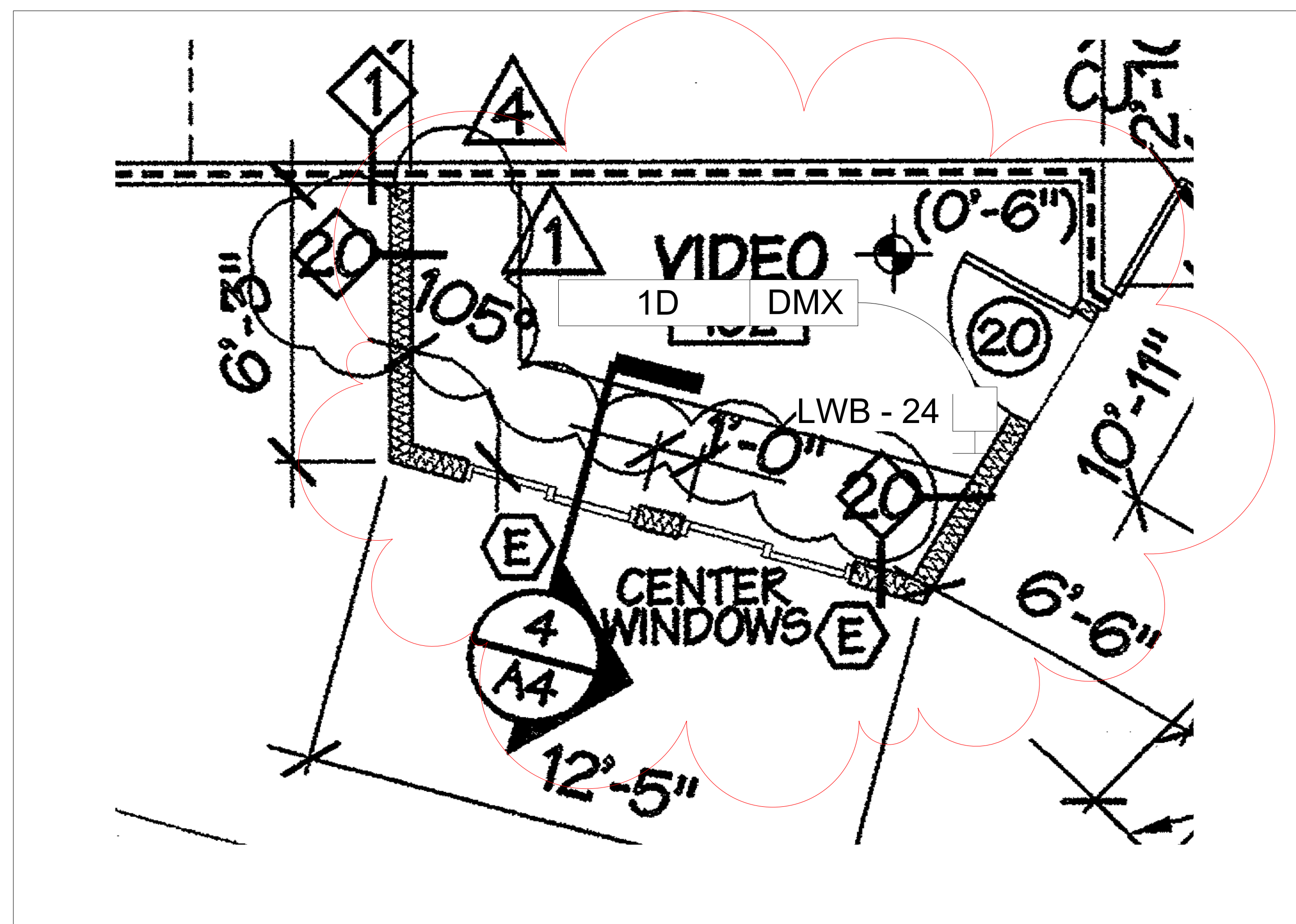
Type	Manufacturer	Part #	Application
A	Carol	(1) #16 AWG stranded (red) (1) #16 AWG stranded (black)	PSU Power
B	Belden	8471	Unison Link
C	Carol	(1) #14 AWG Stranded (green)	Unison Ground
D	Belden	9729	DMX
E	Belden	1583A	Network, DMX
F	Belden	9728	DMX, RFU
G	Carol	(1) #16 AWG stranded (green)	Network Ground
H	Carol	(1) Hot, (1) Neutral (wire size and grounds TBD by EE)	20 Amp Dimmed Circuit
J	Carol	(1) Hot, (1) Neutral (wire size and grounds TBD by EE)	20 Amp Non-dimmed Circuit
K	Carol	(2) Hot, (1) Ground (wire size and grounds TBD by EE)	20 Amp 208 Volt Non-dimmed Circuit
L	Carol	(2) Hot, (1) Neutral, (1) Ground (wire size and grounds TBD by EE)	20 Amp 120/208 Volt Non-dimmed Circuit
M	Carol	(3) Hot, (1) Neutral, (1) Ground (wire size and grounds TBD by EE)	20 Amp 3 Phase 120/208 Volt non-dimmed circuit
N	Carol	(3) Hot, (1) Ground (wire size and grounds TBD by EE)	20 Amp 3 Phase 208 Volt non-dimmed circuit
P	Belden	27615A (6) #16 conductors	Motor Control
R	Data Flex	Scroller Power/Data Cable	LED Power and Data
S	Belden	27331A (3) #16 conductors	Motor Control

All wire substitutions must be approved by Consultant

1. Conduit, wire size, and ground count to be determined by the electrical engineer or Electrical Contractor for all line voltage circuits.

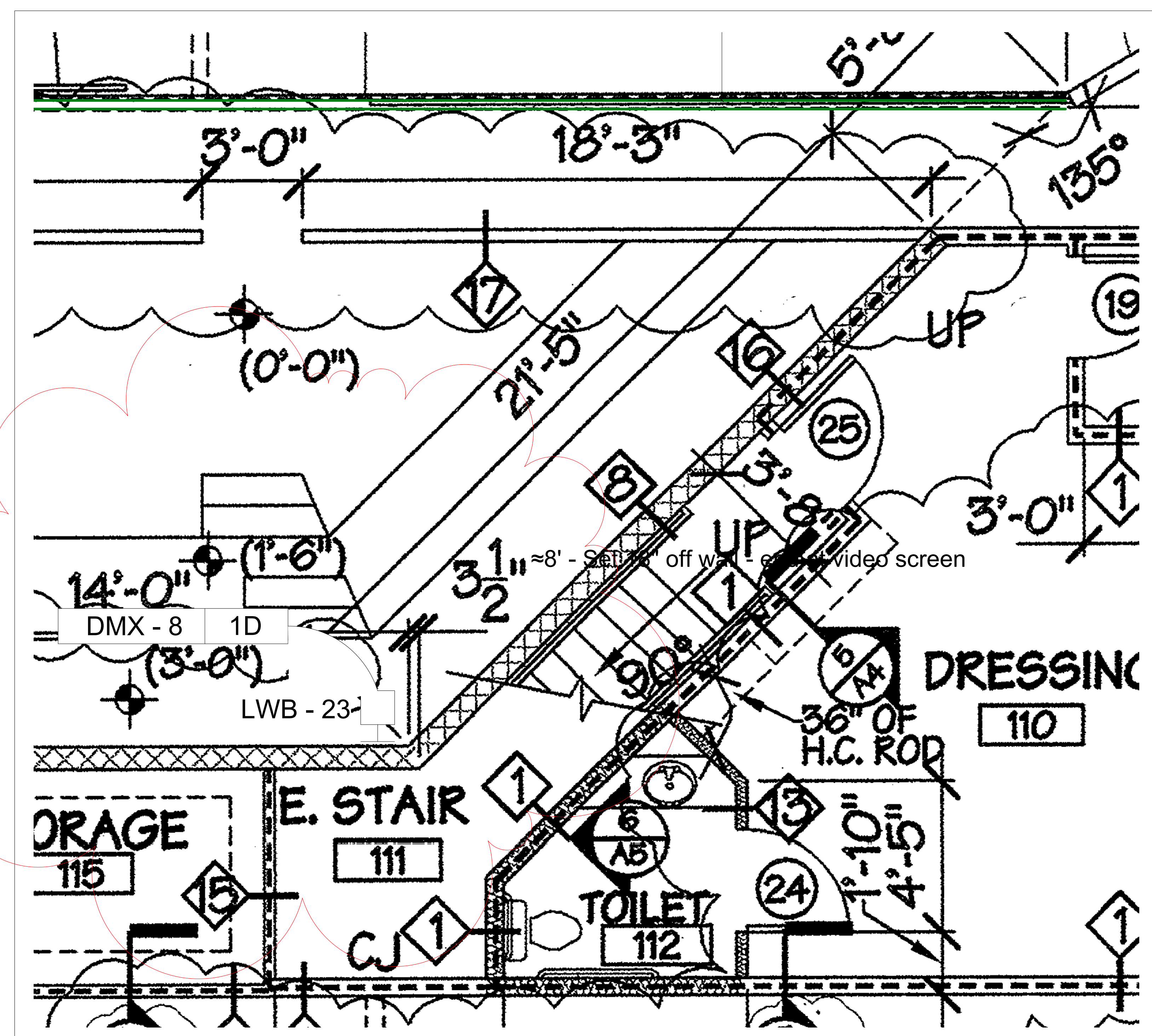
1. Conduit, wire size, and ground count to be determined by the electrical engineer or Electrical Contractor for all line voltage circuits.

[illegible]



Booth DMX Input

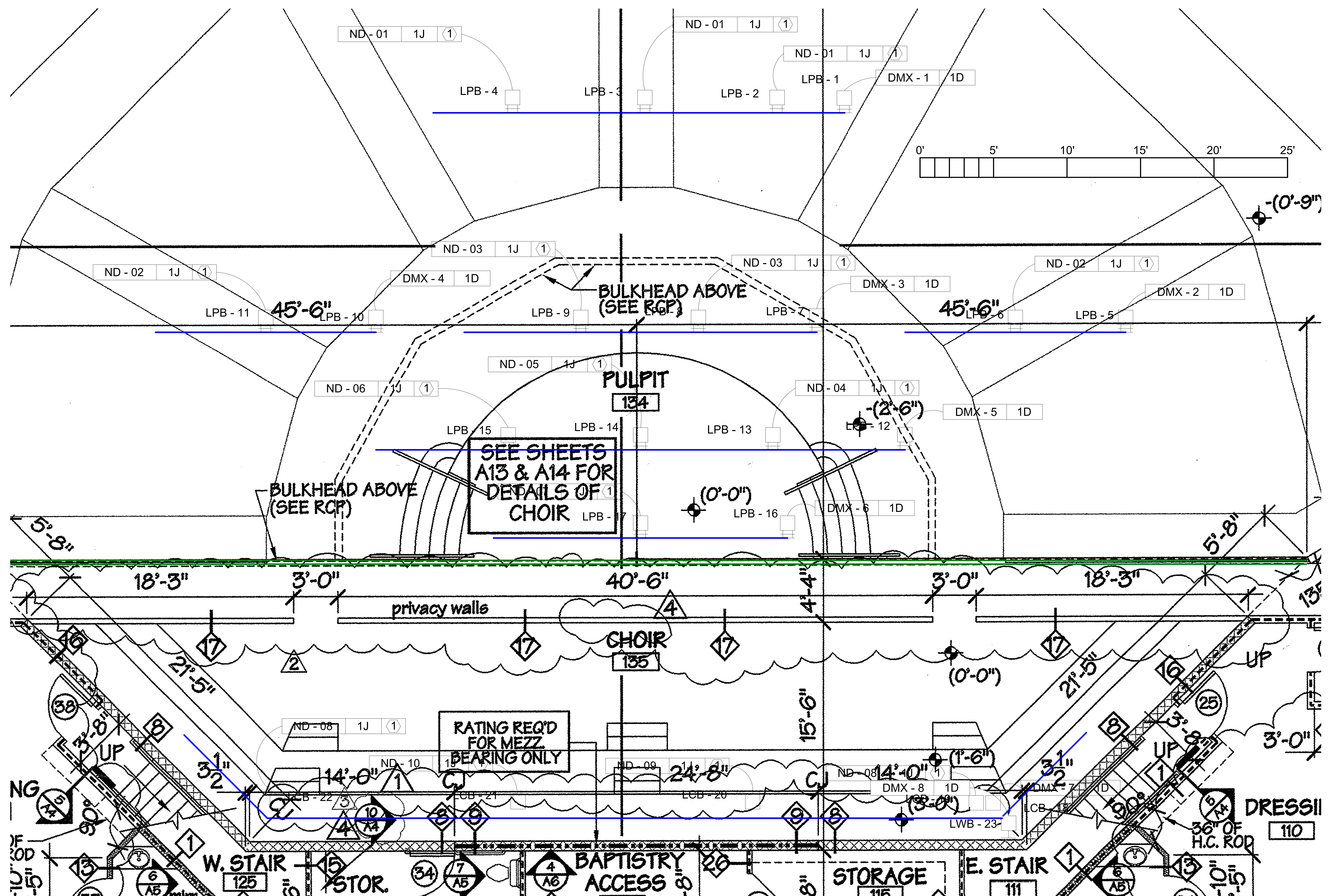
TBD by Pure Mix



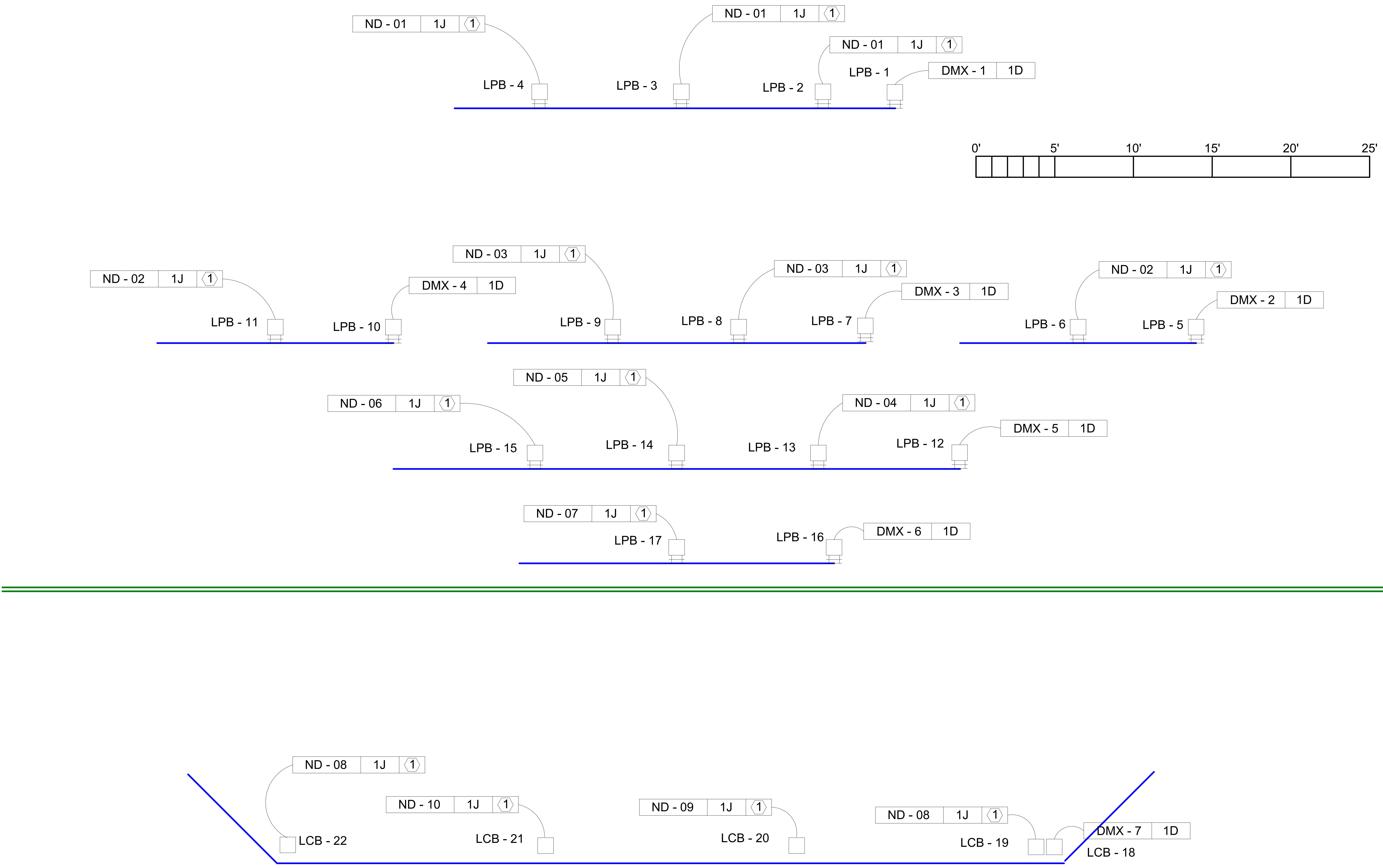
TBD by Pure Mix

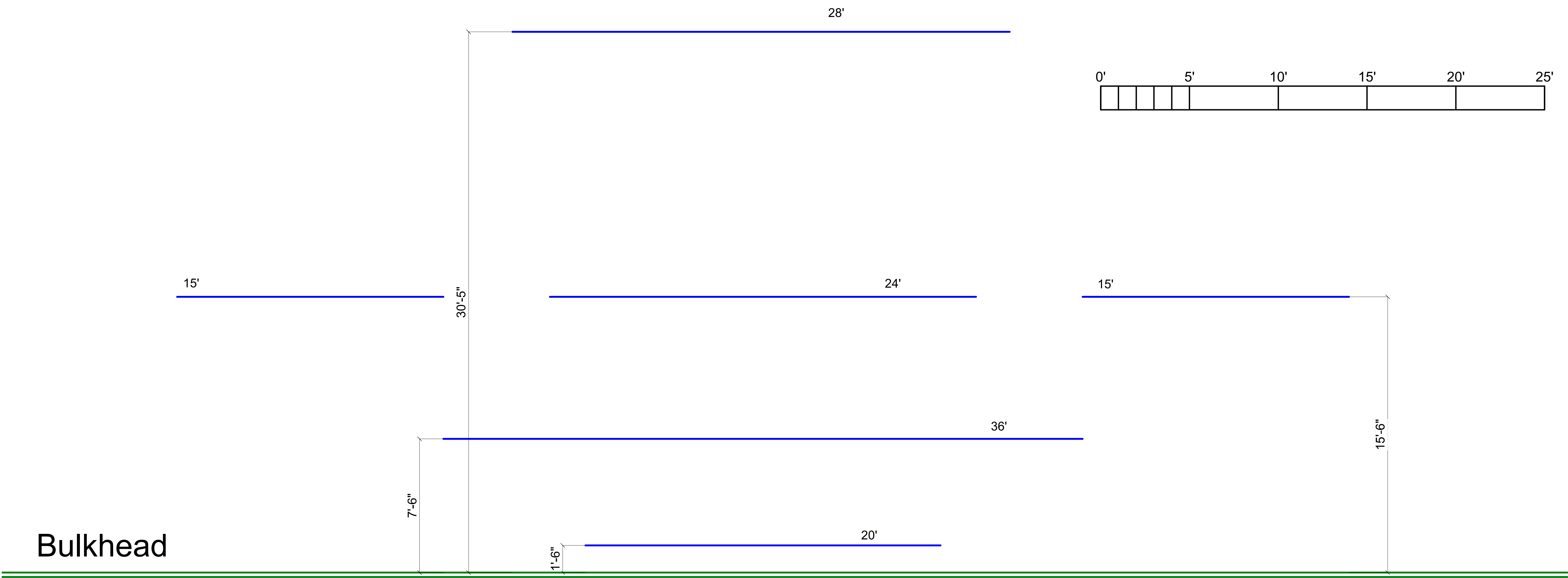
Floor DMX outlet

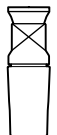















Chauvet Ovation E-190ww 19° Ellipsoidal



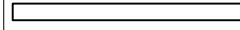
Chauvet Ovation E-190ww 26° Ellipsoidal



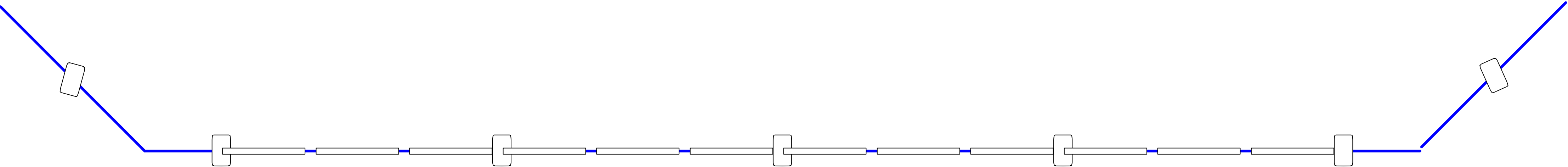
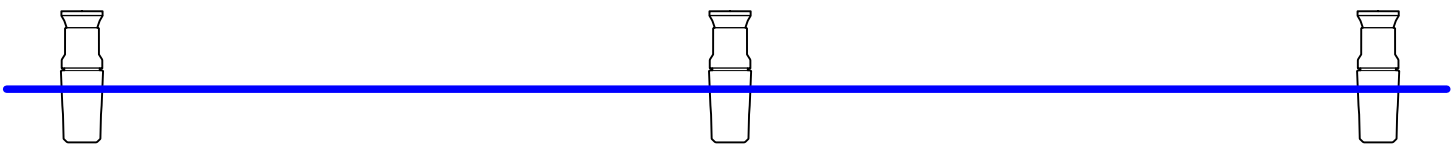
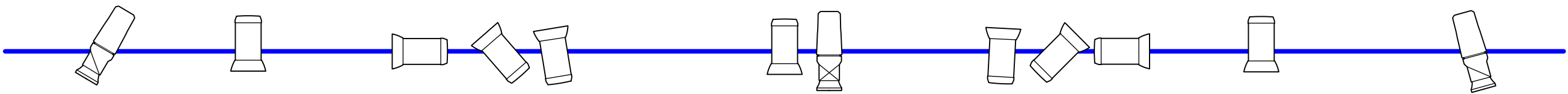
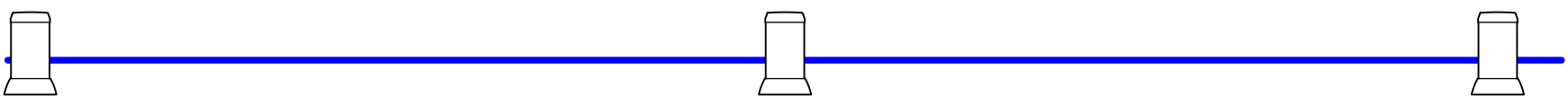
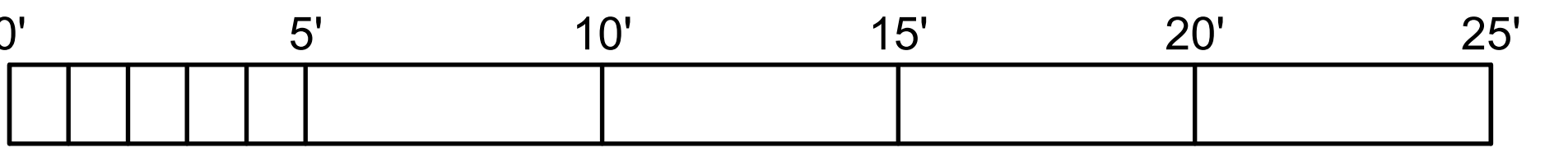
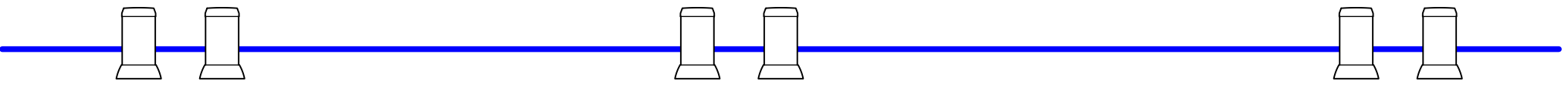
Chauvet Ovation E-190ww 36° Ellipsoidal



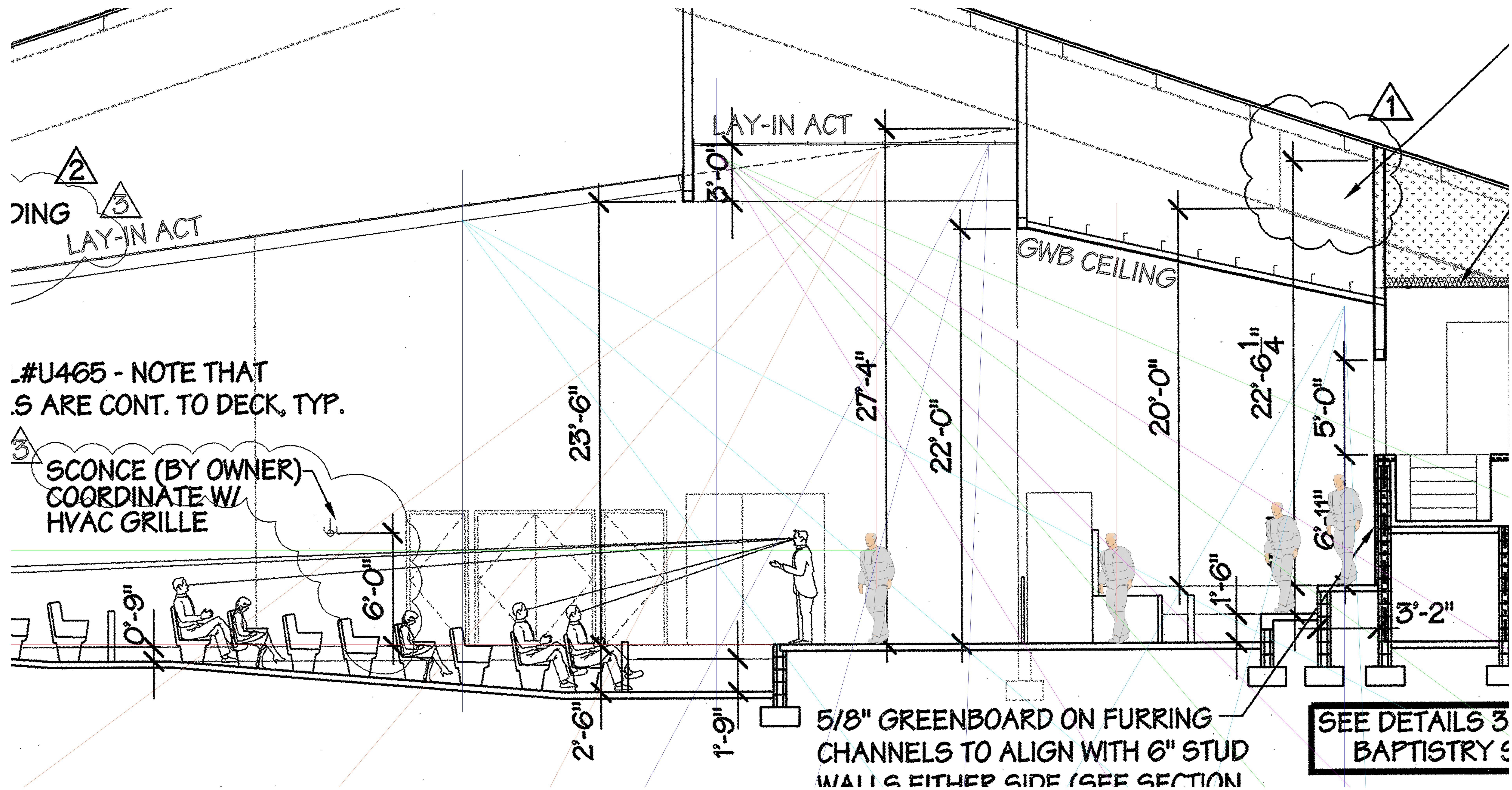
Chauvet Ovation F-165ww Fresnel



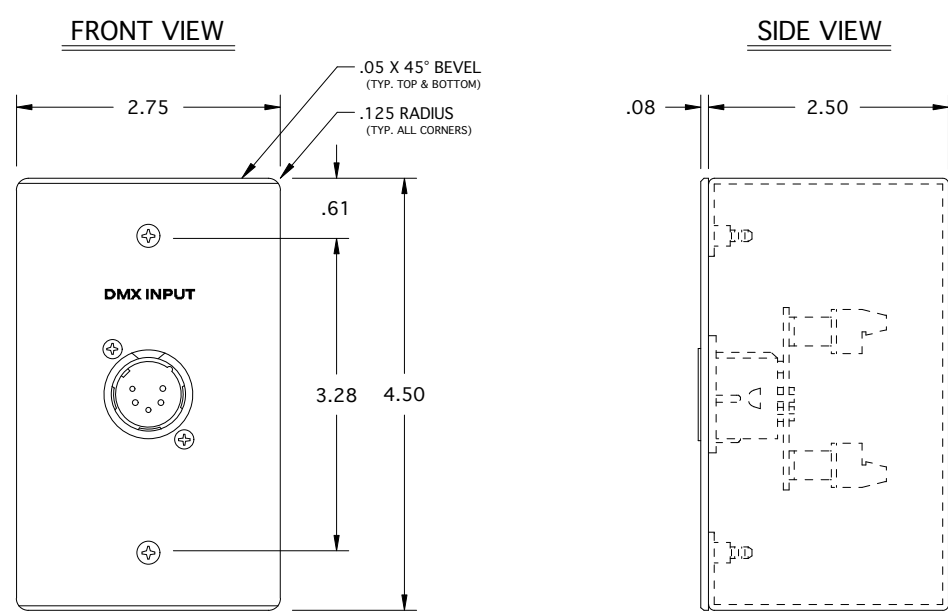
Chauvet ColorDash Batten Quad 12



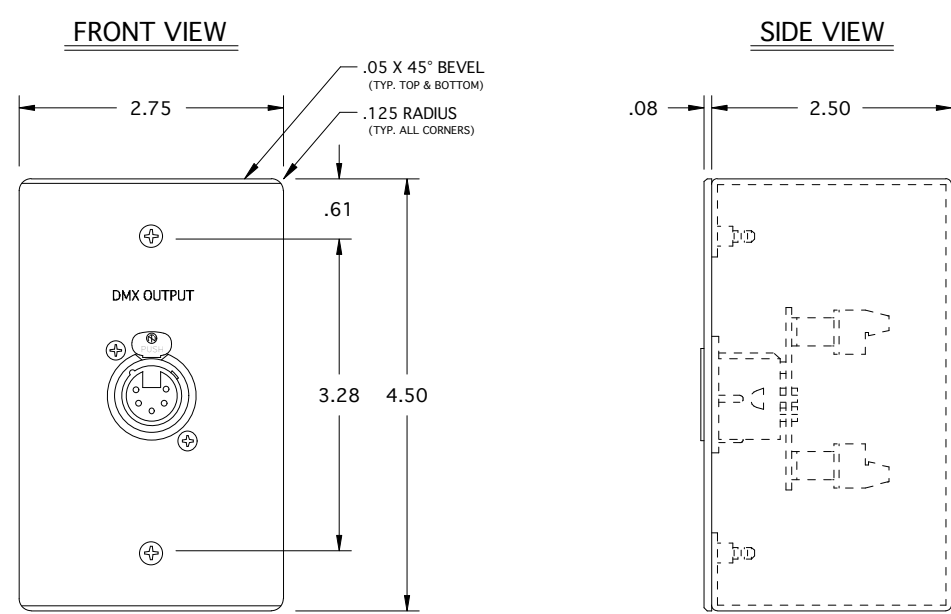




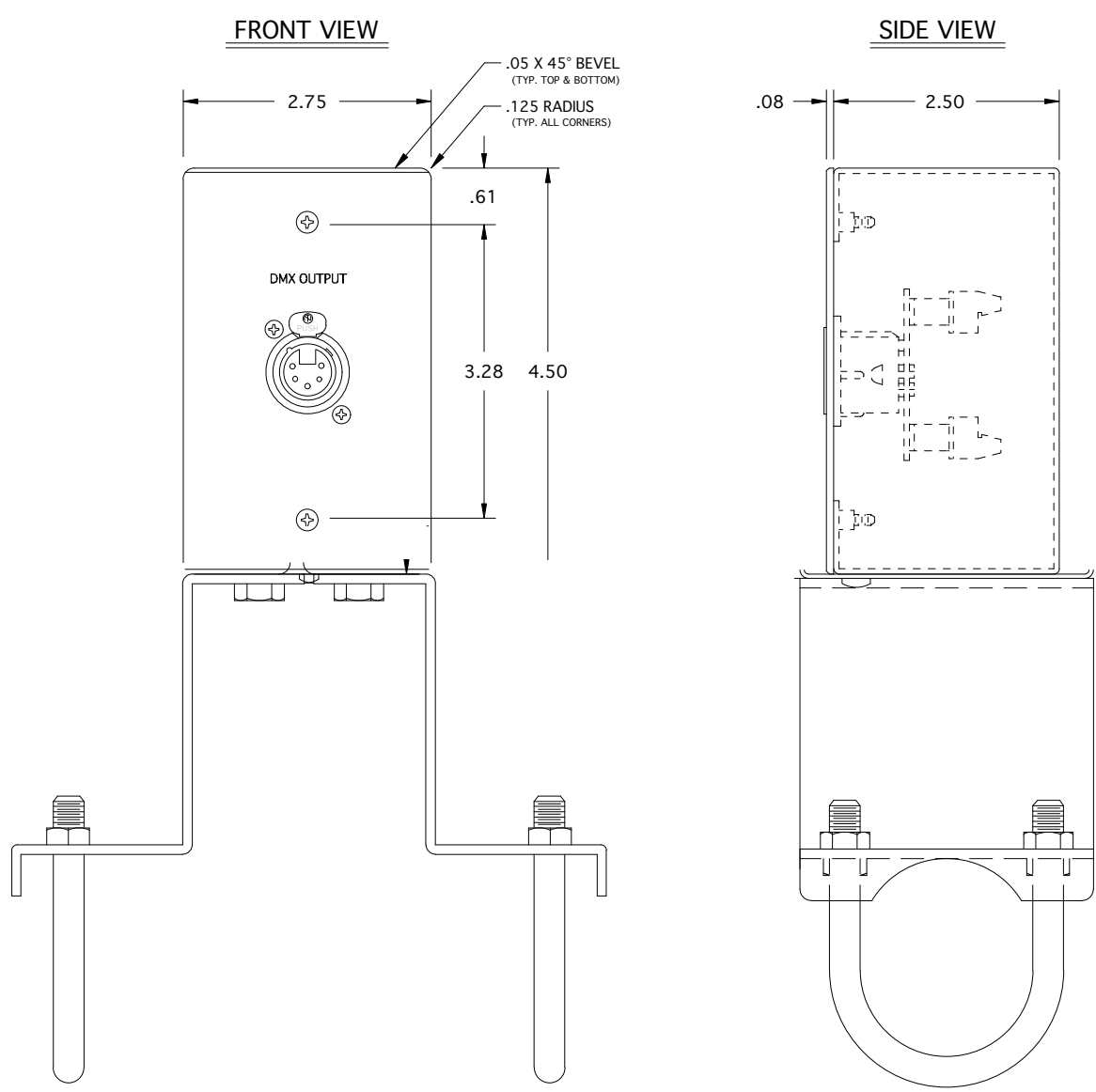




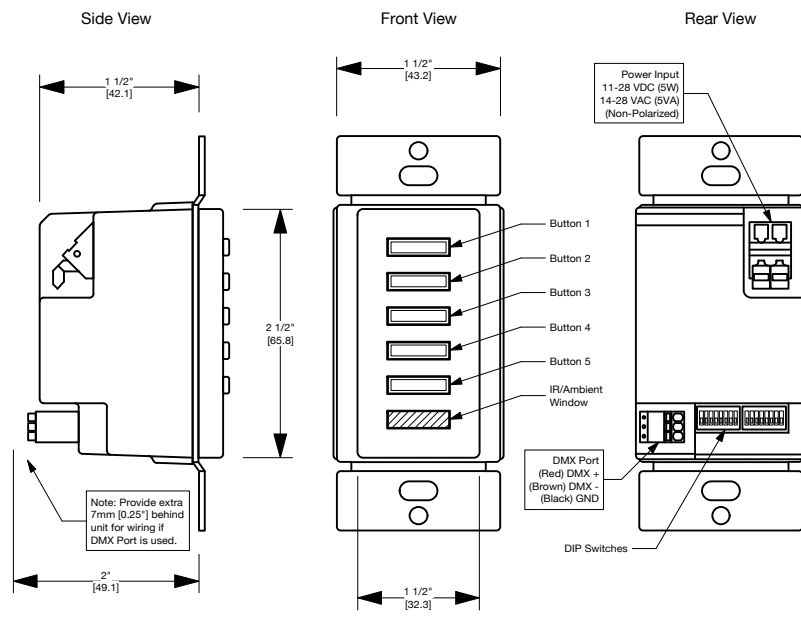
DMX Input



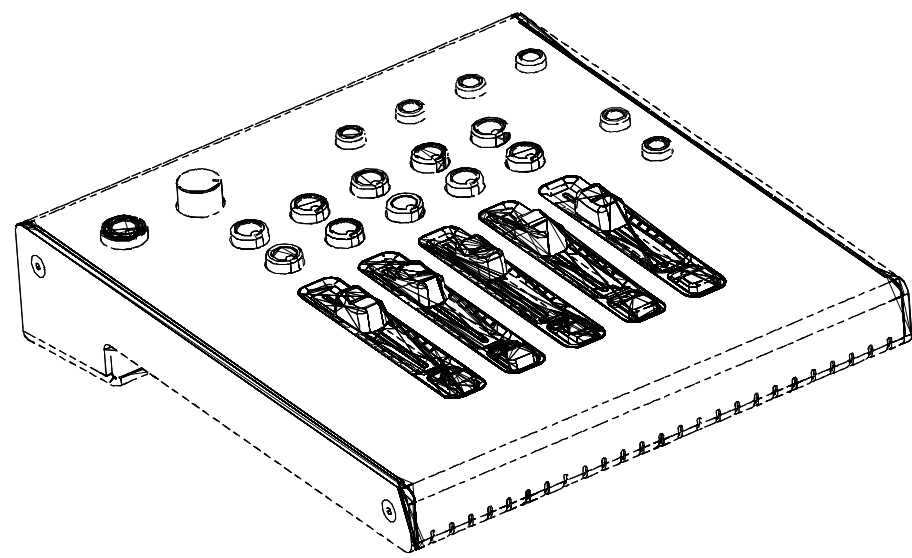
DMX Output



Pipe Mount DMX Output

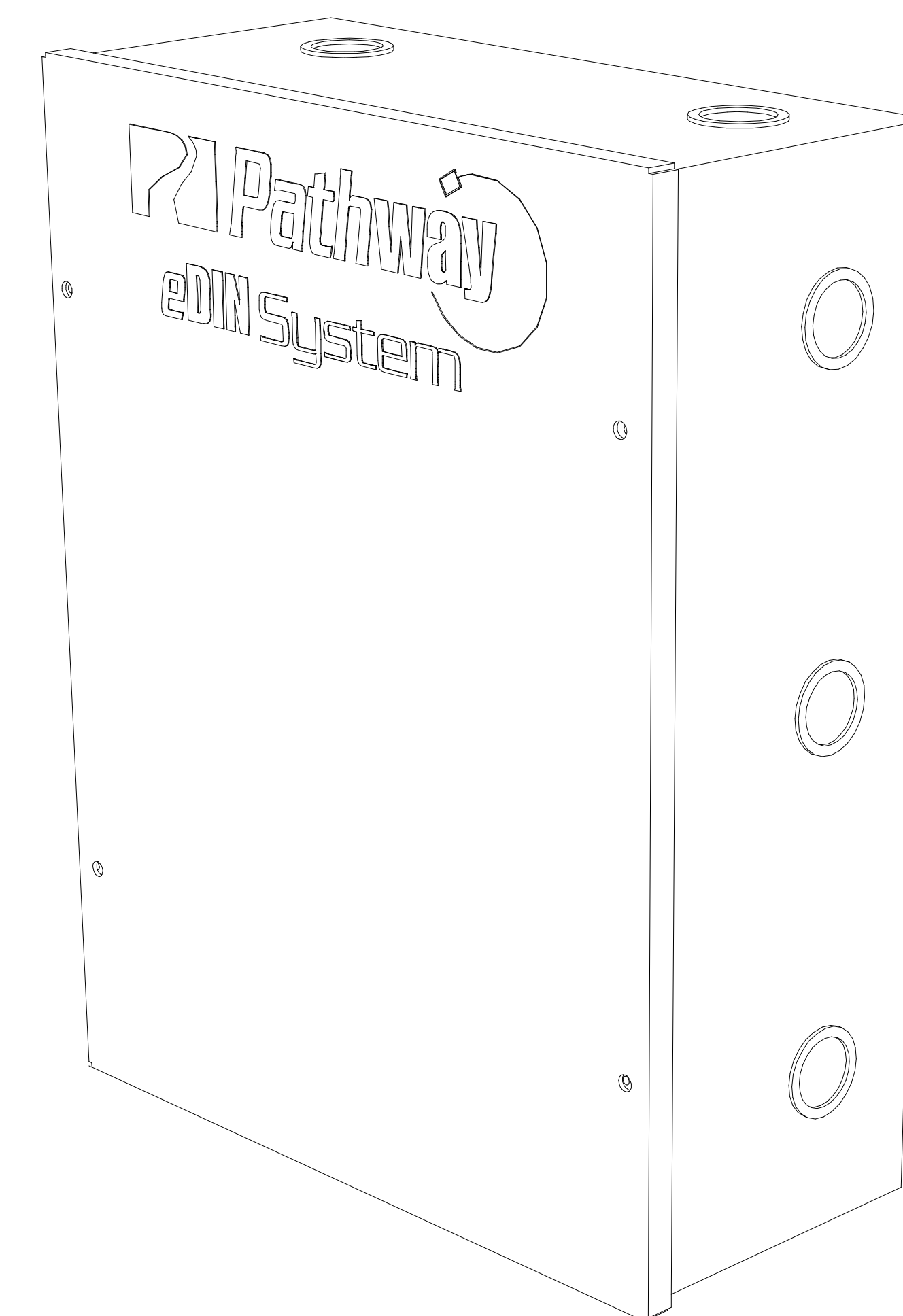
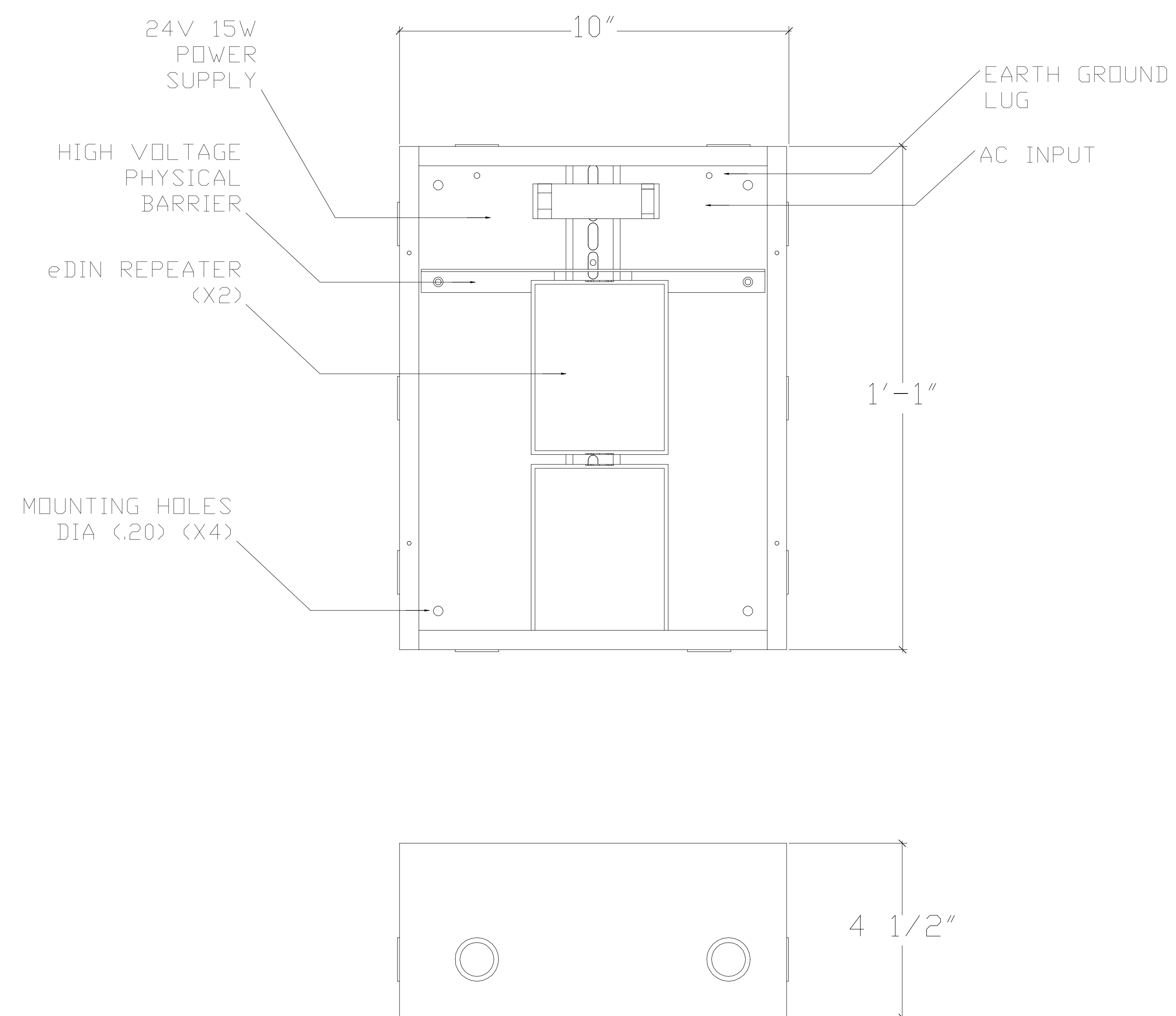


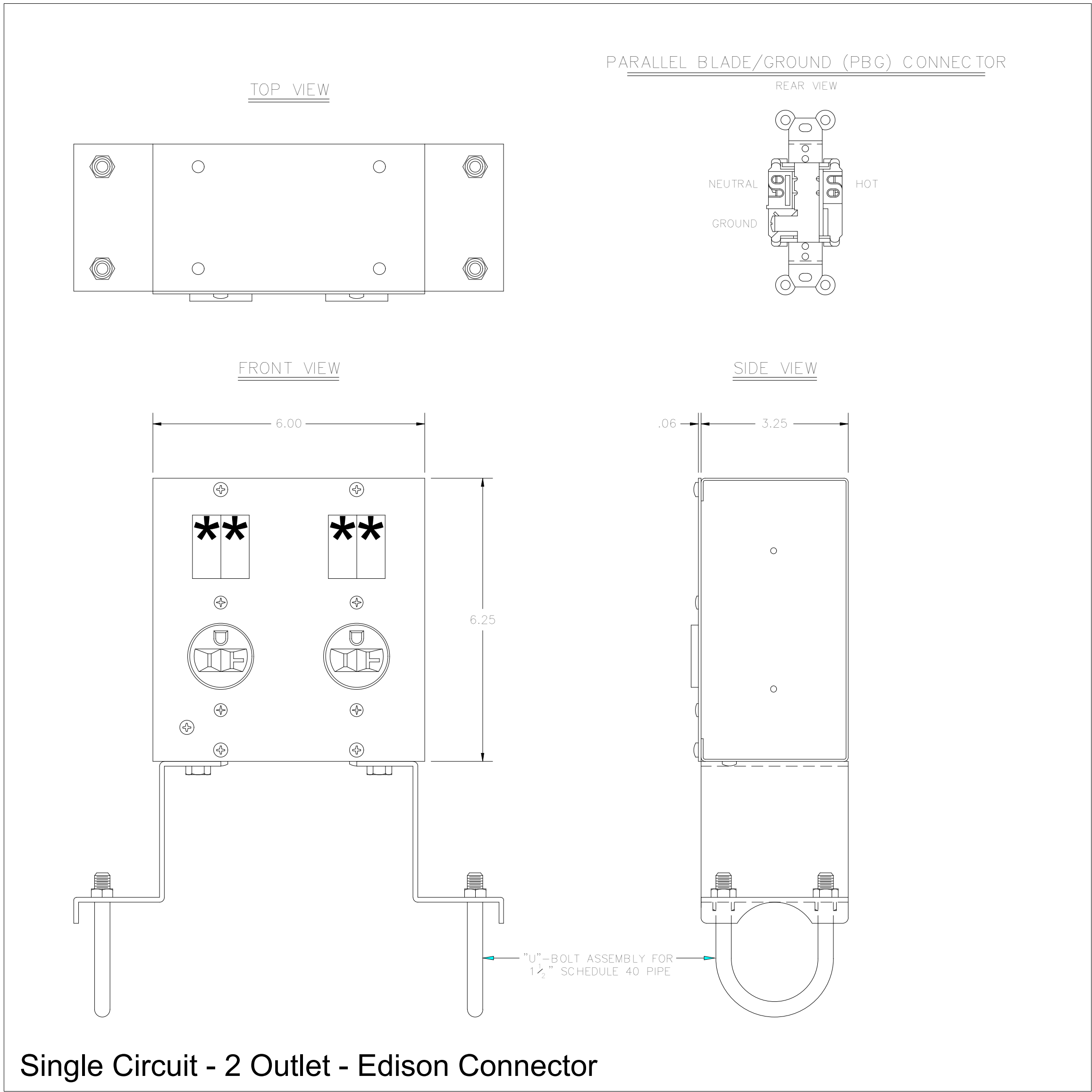
Interactive Technologies Scene Station



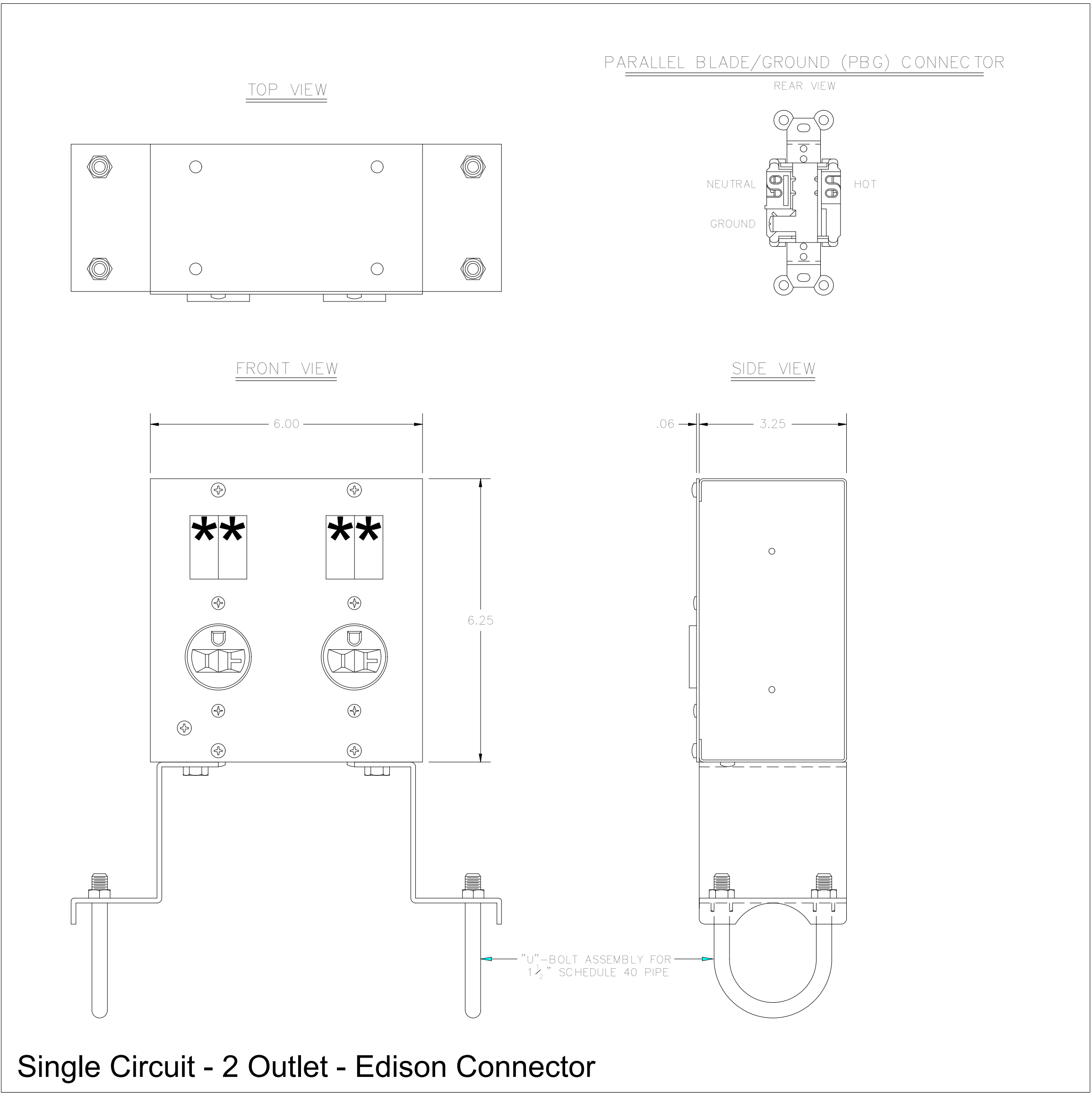
Jands Vista M1 Control Surface



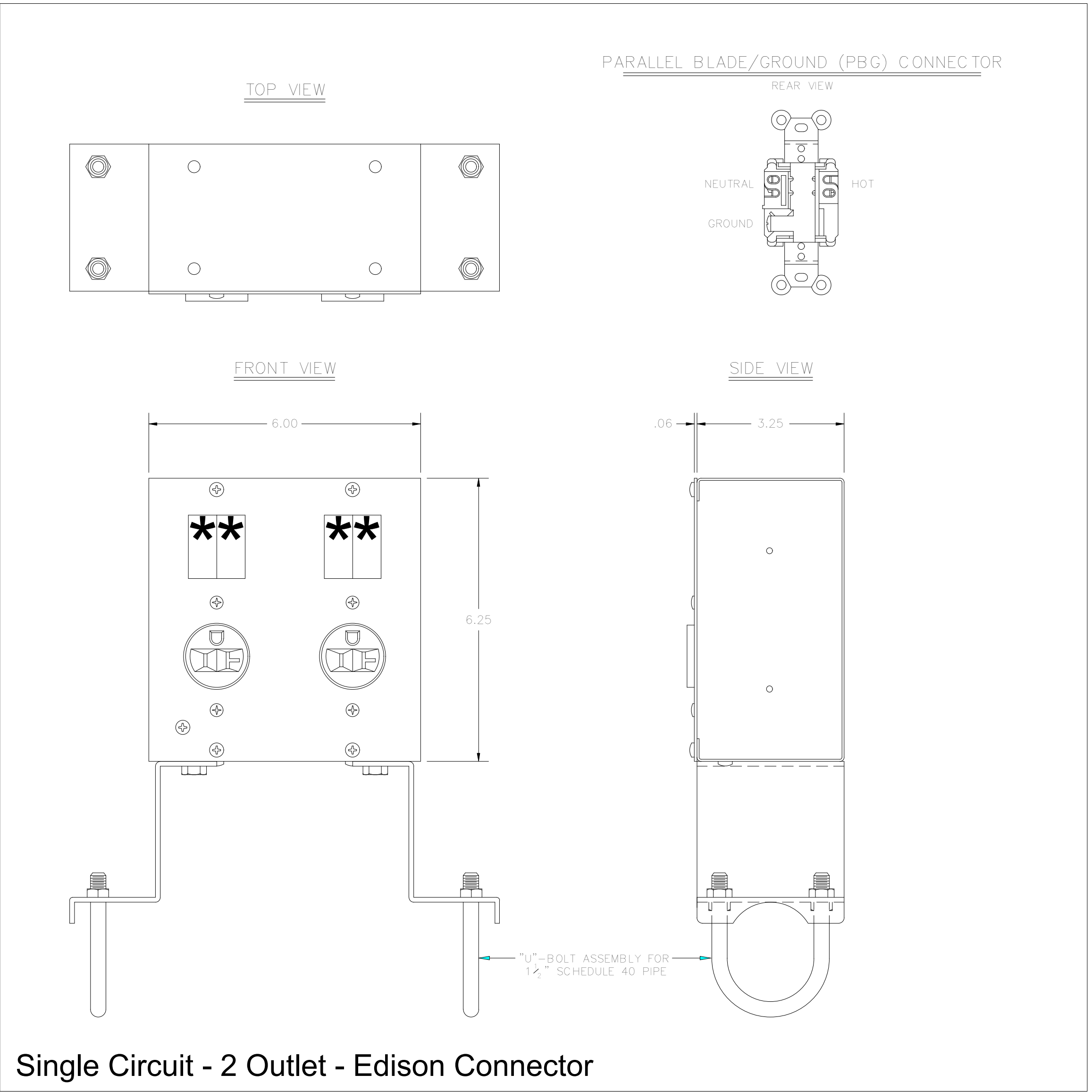




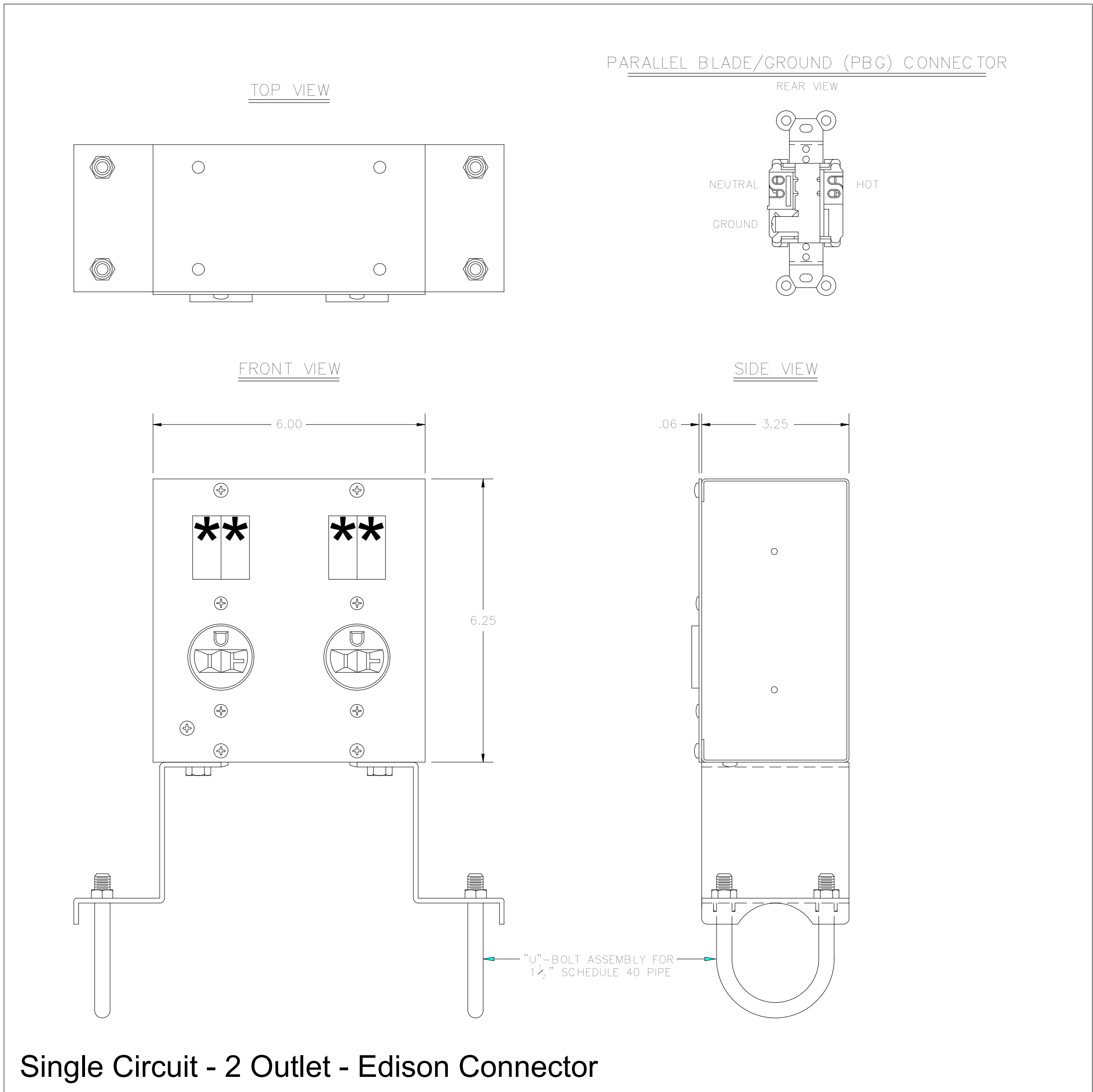
3 boxes Total  
Label ND1



2 boxes Total  
Label ND2



2 boxes Total  
Label ND3



4 boxes Total  
Label ND4, ND5, ND6, ND7



Box Schedule

Box Type	Box Number	Box/Device Size	Box Description	Location	Drawing Number	Mounting	Height	Signal	Back Box Provided By	Back Box Installed By	Device Provided By	Device Installed By
LPB-	1	Single Gang	Lighting Pipe Box	Sanctuary	AVL 1-2	Pipe Mount	Pipe Height	Data	Lighting Contractor	Lighting Contractor	Lighting Contractor	Lighting Contractor
LPB-	2	6" x 6.25" x 3.25"	Lighting Pipe Box	Sanctuary	AVL 1-2	Pipe Mount	Pipe Height	Power	Lighting Contractor	Lighting Contractor	Lighting Contractor	EC
LPB-	3	6" x 6.25" x 3.25"	Lighting Pipe Box	Sanctuary	AVL 1-2	Pipe Mount	Pipe Height	Power	Lighting Contractor	Lighting Contractor	Lighting Contractor	EC
LPB-	4	6" x 6.25" x 3.25"	Lighting Pipe Box	Sanctuary	AVL 1-2	Pipe Mount	Pipe Height	Power	Lighting Contractor	Lighting Contractor	Lighting Contractor	EC
LPB-	5	Single Gang	Lighting Pipe Box	Sanctuary	AVL 1-2	Pipe Mount	Pipe Height	Data	Lighting Contractor	Lighting Contractor	Lighting Contractor	Lighting Contractor
LPB-	6	6" x 6.25" x 3.25"	Lighting Pipe Box	Sanctuary	AVL 1-2	Pipe Mount	Pipe Height	Power	Lighting Contractor	Lighting Contractor	Lighting Contractor	EC
LPB-	7	Single Gang	Lighting Pipe Box	Sanctuary	AVL 1-2	Pipe Mount	Pipe Height	Data	Lighting Contractor	Lighting Contractor	Lighting Contractor	Lighting Contractor
LPB-	8	6" x 6.25" x 3.25"	Lighting Pipe Box	Sanctuary	AVL 1-2	Pipe Mount	Pipe Height	Power	Lighting Contractor	Lighting Contractor	Lighting Contractor	EC
LPB-	9	6" x 6.25" x 3.25"	Lighting Pipe Box	Sanctuary	AVL 1-2	Pipe Mount	Pipe Height	Power	Lighting Contractor	Lighting Contractor	Lighting Contractor	EC
LPB-	10	Single Gang	Lighting Pipe Box	Sanctuary	AVL 1-2	Pipe Mount	Pipe Height	Data	Lighting Contractor	Lighting Contractor	Lighting Contractor	Lighting Contractor
LPB-	11	6" x 6.25" x 3.25"	Lighting Pipe Box	Sanctuary	AVL 1-2	Pipe Mount	Pipe Height	Power	Lighting Contractor	Lighting Contractor	Lighting Contractor	EC
LPB-	12	Single Gang	Lighting Pipe Box	Sanctuary	AVL 1-2	Pipe Mount	Pipe Height	Data	Lighting Contractor	Lighting Contractor	Lighting Contractor	Lighting Contractor
LPB-	13	6" x 6.25" x 3.25"	Lighting Pipe Box	Sanctuary	AVL 1-2	Pipe Mount	Pipe Height	Power	Lighting Contractor	Lighting Contractor	Lighting Contractor	EC
LPB-	14	6" x 6.25" x 3.25"	Lighting Pipe Box	Sanctuary	AVL 1-2	Pipe Mount	Pipe Height	Power	Lighting Contractor	Lighting Contractor	Lighting Contractor	EC
LPB-	15	6" x 6.25" x 3.25"	Lighting Pipe Box	Sanctuary	AVL 1-2	Pipe Mount	Pipe Height	Power	Lighting Contractor	Lighting Contractor	Lighting Contractor	EC
LPB-	16	Single Gang	Lighting Pipe Box	Sanctuary	AVL 1-2	Pipe Mount	Pipe Height	Data	Lighting Contractor	Lighting Contractor	Lighting Contractor	Lighting Contractor
LPB-	17	6" x 6.25" x 3.25"	Lighting Pipe Box	Sanctuary	AVL 1-2	Pipe Mount	Pipe Height	Power	Lighting Contractor	Lighting Contractor	Lighting Contractor	EC
LCB-	18	Single Gang	Lighting Ceiling Box	Sanctuary	AVL 1-2	Ceiling Mount	Ceiling Height	Data	EC	EC	Lighting Contractor	Lighting Contractor
LCB-	19	Single Gang Duplex	Lighting Ceiling Box	Sanctuary	AVL 1-2	Ceiling Mount	Ceiling Height	Power	EC	EC	EC	EC
LCB-	20	Single Gang Duplex	Lighting Ceiling Box	Sanctuary	AVL 1-2	Ceiling Mount	Ceiling Height	Power	EC	EC	EC	EC
LCB-	21	Single Gang Duplex	Lighting Ceiling Box	Sanctuary	AVL 1-2	Ceiling Mount	Ceiling Height	Power	EC	EC	EC	EC
LCB-	22	Single Gang Duplex	Lighting Ceiling Box	Sanctuary	AVL 1-2	Ceiling Mount	Ceiling Height	Power	EC	EC	EC	EC
LWB-	23	Single Gang	Lighting Wall Box	Sanctuary	AVL 1-1	Wall Mount	18" AFF	Data	Lighting Contractor	Lighting Contractor	Lighting Contractor	Lighting Contractor
LWB-	24	Single Gang	Lighting Wall Box	Sanctuary	AVL 1-1	Wall Mount	18" AFF	Data	Lighting Contractor	Lighting Contractor	Lighting Contractor	Lighting Contractor
DMX		Custom surface Mount device	Pathway DMX Data Splitter	TBD	AVL 5-2	Surface Wall Mount	Working Height	Control/power	Lighting Contractor	Lighting Contractor	Lighting Contractor	EC
ND	1	Lyntec LCRP-8	DMX Controlled 8 Circuit Relay Panel	TBD	TBD	Surface Wall Mount	Working Height	Control/power	Lighting Contractor	EC	Lighting Contractor	EC

Power Schedule

NDP														
AMPS	Poles	FDR#	Serves	CKT. K.W.	Pole#	A	B	C	Pole#	CKT. K.W.	Serves	FDR#	Poles	AMPS
20	1	ND1	LPB-2,3,4	2	1	4			2	2	LPB-6,11	ND2	1	20
20	1	ND3	LPB-8,9	2	3		4		4	2	LPB-13	ND4	1	20
20	1	ND5	LCS-14	2	5			4	6	2	LCS-15	ND6	1	20
20	1	ND7	LCS-17	2	7	4			8	2	LCS-19,22	ND8	1	20
20	1	ND9	LCS-20	2	9		4		10	2	LCS-21	ND10	1	20
20	1	ND11	Data Splitter	1	11			2	12	1	Relay Panel	ND12	1	20
						8	8	6						

